

CERTIFICATE OF LOCATION OF GOVERNMENT CORNER

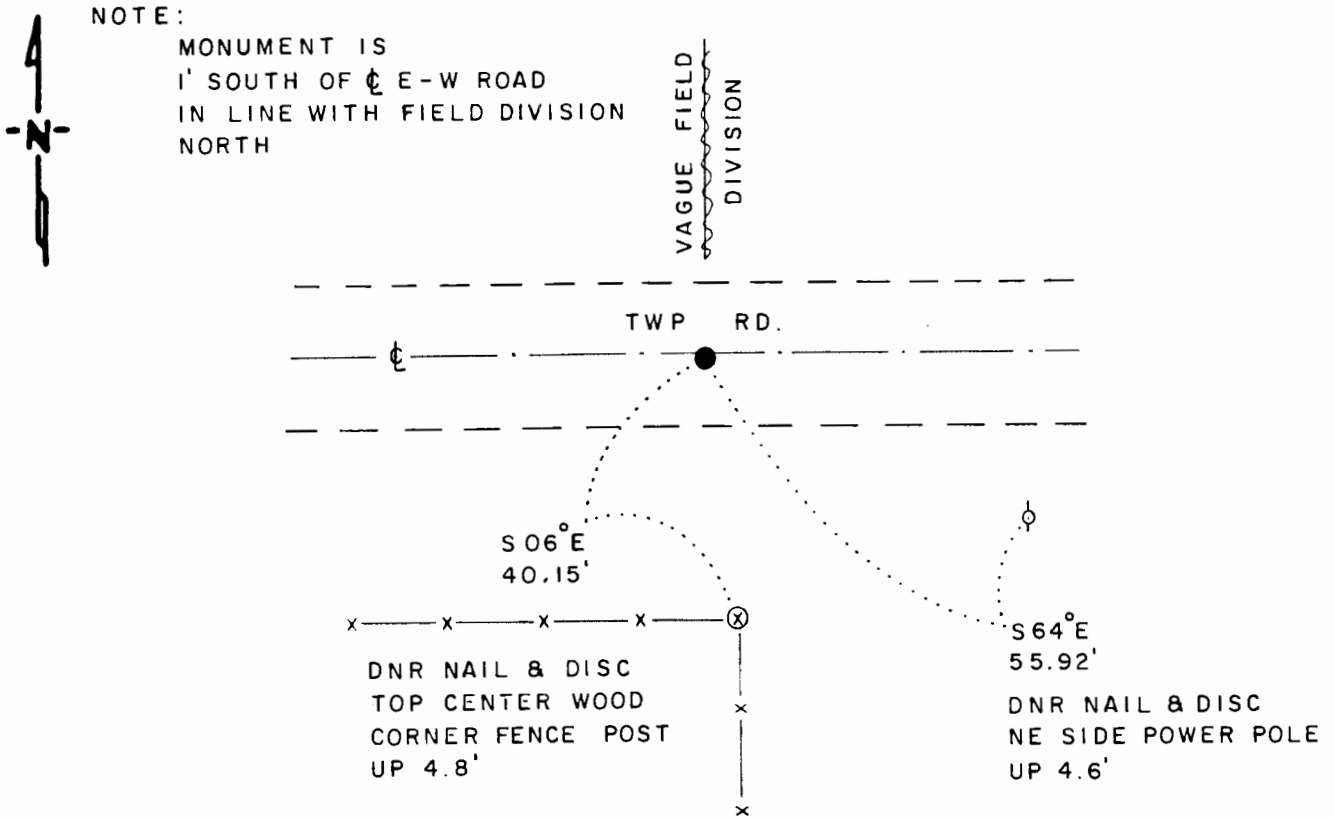
NORTHEAST Corner of Section 26, Township 107 N, Range 40 W, 5th P.M.

STATE OF MINNESOTA, County of MURRAY

At the corner location shown on the sketch

- On 5-14-91 found a 5" x 18" CONCRETE MONUMENT WITH "+" IN
DATE TOP, DOWN 2.4'
 - left monument as found, lowered monument, removed monument (explain)
- On 5-14-91 placed a 3/4" x 24" REBAR WITH ALUMINUM CAP STAMPED
DATE "DNR SURVEY MARKER", OVER CONCRETE MONUMENT, DOWN 0.3'

SKETCH OF REFERENCE TIES



1983 MURRAY COUNTY
 COORDINATE SYSTEM
 N = 174,042.259
 E = 543,078.247

BEARINGS OBSERVED WITH COMPASS

Statement of evidence relative to this corner location is on back of page J.B.M. 6-24-91
WMA-00618.00.00.01

I hereby certify that this document and the data contained herein was prepared by me or under my direct supervision.

Bruce W. Shipp 8-12-91
SIGNATURE DATE

Registration No. 17003

Land Surveyor, Professional Engineer
 County Surveyor, County Engineer

OFFICE OF THE COUNTY RECORDER
 County of MURRAY

I hereby certify that this document was filed in the Co. Recorders office at _____ M. on the _____ day of AUG 15 1991 A.D., 19 _____

County Recorder James V. Johnson
 By _____, Deputy

DOCUMENT NO. _____

Northeast Corner of Section 26, Township 107 North, Range 40 West

The DNR Bureau of Engineering contacted the following for survey information:

Secretary of State's Office
Murray County Recorder's Office and Highway Engineer's Office
Chicago and North Western Railway Office in St. Paul
Minnesota Department of Transportation Office in St. Paul

- 1861 U.S. General Land Office notes obtained from the Secretary of State's Office show the corner marked with pits and mound.
- 1898 Surveyor's Record Book A, page 77, obtained from the County Recorder's Office contains a survey by J. W. Woolstencraft. Survey shows a government stake and a 6" by 6" by 18" stone at corner. The corner is shown:
40.26 chains (2657.16') from the north quarter corner of Section 25
- 1934 Surveyor's Record Book A, page 77, obtained from the County Recorder's Office contains corner information by F. A. March. A concrete stone is shown at corner but does not indicate if found or set. The following ties are shown to corner:
R.P. tack in corner fence post, south, 25.3 feet
R.P. tack in fence post, southwest, 41.3 feet
- 1991 May, The DNR Bureau of Engineering hired a backhoe to dig for evidence of corner. A pointed 2" by 2" by 1' long rotten wood stake was found down 2'. Also, found a 5" diameter by 18" long concrete monument with a "+" on top down 2.4'. The wood stake was not found over the concrete monument. Searched for but found no evidence of the record ties. The concrete monument was found to be:
1 foot south of the center line of an east-west road
in line with a fence south
in line with a vague field division north
2657.62 feet from the north quarter corner of Section 25

Analysis of the above information led the DNR Bureau of Engineering to conclude that the found concrete monument marks the location of the corner. Discarded the rotten wood stake.